



FLEETSYSTEMS

Intelligent solutions with New Holland's state-of-the-art technology.

In addition to developing the best construction machines, New Holland has intelligent systems to facilitate fleet management and make the operation of each machine more efficient. Discover FleetSystems solutions.



FLEETFORCE™

Maximize your fleet productivity with effective planning and increase your profitability.

The FleetForce is the telematics system that collects information about machine performance and location, and makes it available in a user-friendly format. With the support of your dealership's FleetForce expert, you'll get more efficiency, lower operating costs, and higher profitability.

FleetForce *hardware* and the advanced subscription available on New Holland products are seamlessly integrated into the machine via the CAN-bus data system to allow you to:

- **Maximize the productivity of your fleet**

The FleetForce provides performance and vital information about your machine. With it, you identify the machines that are not being used or those that are being heavily used, compare the machines' performance or trend in fuel consumption over journeys, and evaluate machine notifications to optimize the use of your equipment. In addition, you can configure the system to receive alert signals of scheduled maintenance in your e-mail.

- **Effective planning**

The FleetForce allows you to control your fleet, identifying trends in machine performance, operator efficiency, and even operator training needs.

- **Higher profitability**

Your dealer can help you increase your fleet productivity by analyzing machine information, whether it's data relating to your machine's downtime or maintenance needs, thus maximizing service efficiency.



CHARACTERISTICS OF THE PLAN		BASIC (2-hour data interval)	ADVANCED (10-minute data interval)	SATELLITE
🕒 Fleet management	Location and	✓	✓	✓
	Machine hours reports	✓	✓	✓
⚙️ Planned maintenance	Plan and prepare for maintenance intervals	✓	✓	✓
🔒 Security	Geofencing: Real-time notification of unplanned movements	✓	✓	✓
	Curfew: Real-time notification when machine is turned on at non-allowed times	✓	✓	✓
📊 Utilization Analysis & Reporting	Machine run times, idle time vs. operation, travel time, machine utilization by location	✓	✓	✓
📈 Performance analysis	Engine load data to compare machines and operators to identify operating trends		✓	✓
🛢️ Fuel information	Fuel consumption data for a machine or a fleet		✓	✓
⊕ Machine health parameters	Monitors machine operating characteristics: temperatures, pressures, alerts for out-of-range parameters and CAN-bus parameters for diagnosis and troubleshooting		✓	✓
⊗ Fault code	Reports real-time fault codes		✓	✓

SUBSCRIPTION PACKAGE

Three subscription packages are available, depending on the level of detail in the information:

- Basic subscription uses essential inputs from ignition key contact, motion detection and GPS tracking to ensure a wealth of information and reporting.
- Advanced subscription adds custom control data and unique information via our CAN-bus data.
- Satellite connection subscription must be added to Basic and/or Advanced subscription. The update of your equipment's position and hour meter data with the Satellite connection happens every 4 hours, with complete reports issued every 24 hours.

Basic and Advanced packages offer up to a five-year subscription and a one-year or two-year Satellite subscription. Besides, you can purchase extensions for all from your dealer through the Parts Department.





FLEETGRADE

Leveling Systems

Increase accuracy and minimize your costs.

Automatic elevation and tilt control with our 2D and 3D systems.

Full automatic blade control. 2D leveling system.

The leveling systems offer new possibilities for preparing the work, as it regulates the elevation and transverse inclination of the blade with the help of robust, high-tech sensors

The benefits of using FleetGrade 2D are:

- Reduction or even elimination of rework.
- Achievement of the designed specification quickly and accurately, saving time, material and money.
- Automatic blade control, allowing grading work to be carried out at speeds higher than traditional.

Efficient leveling using 3D design information.

You can go from a laser-based 2D solution to a complete 3D solution with a robotic total station or RTK base with GPS.

- Take the project into your cabin.
- You no longer need to rely on alignments, deployments or pickets.



Powered by



Powered by



FLEETGRADE

Digging systems

Work independently and precisely anywhere.

The FleetGrade digging system offers three options:

FleetGrade 1D digging system.

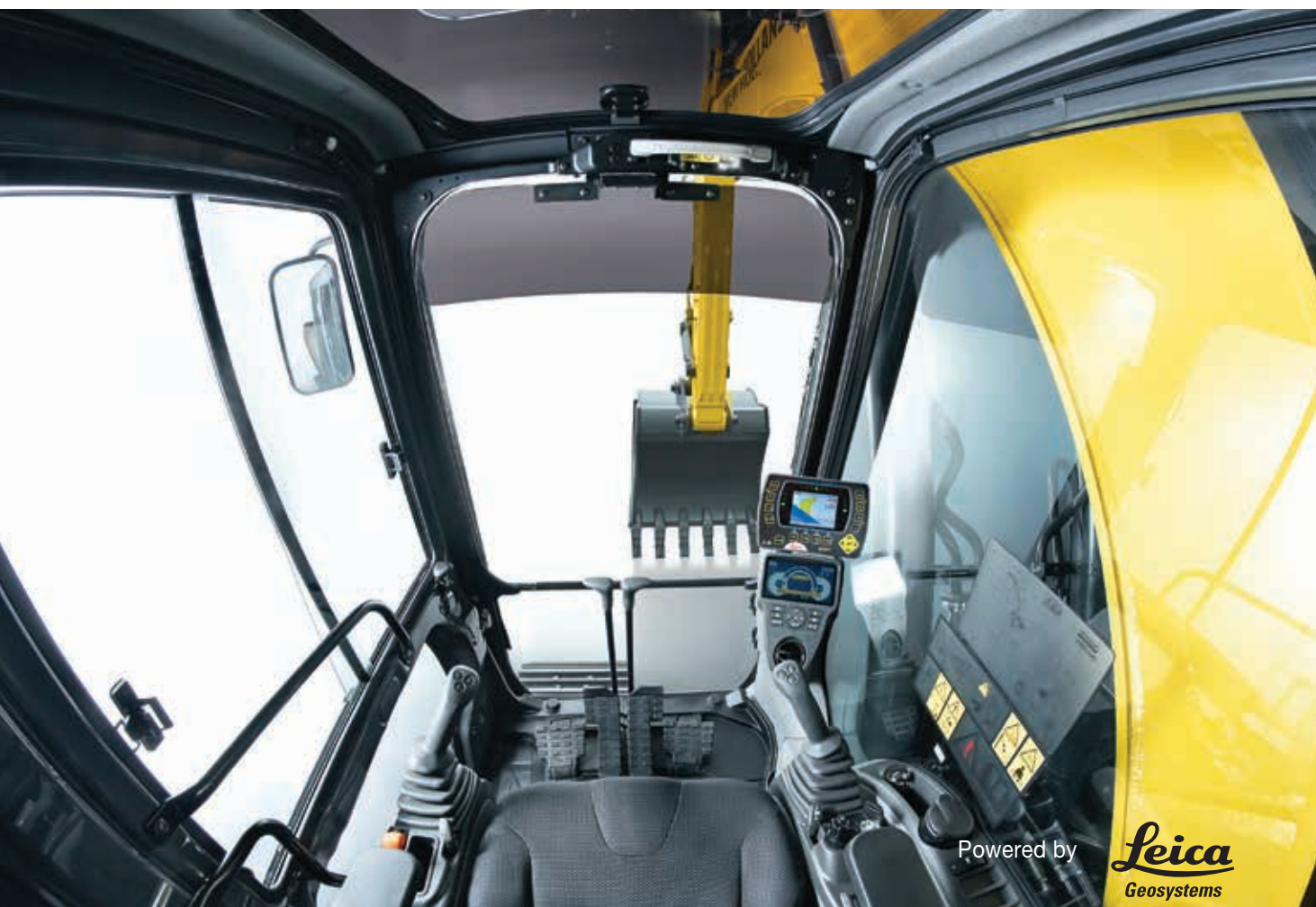
- With this digging system, you do not need to use a laser level.
- The cutting depth is displayed directly on the panel and from inside the cab.
- The 1D digging system uses three tilt sensors mounted on the boom, arm, and bucket.

FleetGrade 2D digging system.

- The two-slope digging system combines depth, longitudinal and transverse slopes.
- It provides a complete picture of the digging work.

FleetGrade 3D digging system.

- With the 3D system, you work with the high precision of GPS.
- You can monitor the digging position by a digital terrain model.



IONHCE1018

Learn more at your dealership.
www.newholland.com.br

Factory:
Contagem – Minas Gerais – Brazil
2.237, General David Sarnoff Avenue
Inconfidentes – zip code 32210-900

